



DEUS® Rope-Over-Wire Anchor Chokers

Wire anchor connectors that are truly flexible.



How do you set an anchor without worries? Use a DEUS Rope-Over-Wire (ROW) Anchor Choker. The DEUS ROW can do everything synthetic rope anchor connectors do, but with the strength, durability and cut-resistance of steel cable.

You can have it all

Each DEUS ROW is constructed of galvanized steel wire cable, then sheathed with braided polyester rope. Why? So you get everything you need without the worries:

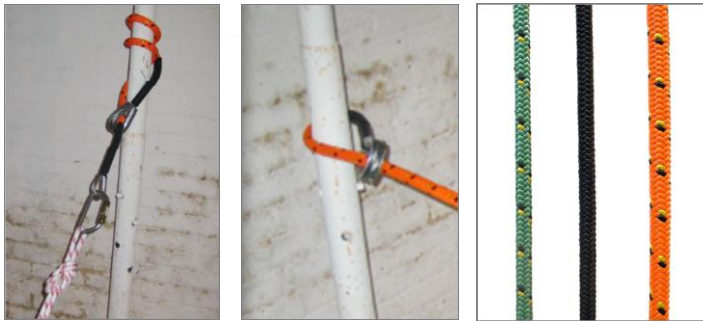
Ultimate flexibility – even a Klemheist friction hitch is possible to minimize slippage

Superior edge protection – the steel cable will stand up to any edge you're up against.

Extreme fire resistance – compare the fire-resistance of a steel core to any other fiber

Easy on your hands – no cracking, no sharp frayed wires to cut your hands; no gloves needed

Extreme strength – the strength of steel so it is durable and cut-resistant



DEUS Rope-Over-Wire Anchor Choker Ordering Information

Item	Color	Length	Wire Rope Diameter	Part No.
DEUS ROW G	Green	4 ft	1/4" (6.4 mm)	DR-0832G-04
	Green	6 ft	1/4" (6.4 mm)	DR-0832G-06
	Green	8 ft	1/4" (6.4 mm)	DR-0832G-08
	Black	4 ft	1/4" (6.4 mm)	DR-0832B-04
	Black	6 ft	1/4" (6.4 mm)	DR-0832B-06
	Black	8 ft	1/4" (6.4 mm)	DR-0832B-08
DEUS ROW G³	Orange	4 ft	3/8" (6.4 mm)	DR-1232O-04
	Orange	6 ft	3/8" (6.4 mm)	DR-1232O-06
	Orange	8 ft	3/8" (6.4 mm)	DR-1232O-08

Certified...and then some

The DEUS ROW Anchor Chokers meet the ANSI standard and are certified by UL to meet the NFPA 1983 (06-ED) "G" standard. And only the DEUS G³ exceeds the NFPA standard by qualifying for "G" certification in all three different rigging methods: basket, end-to-end and choker.

Don't choose between rope and steel cable. Just choose the best – DEUS Rope-Over-Wire Anchor Chokers. Available in various lengths and colors.

When lives are on the line, trust DEUS Rescue.



info@DEUSrescue.com ■ 866.405.3461 ■ www.DEUSrescue.com